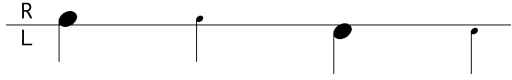
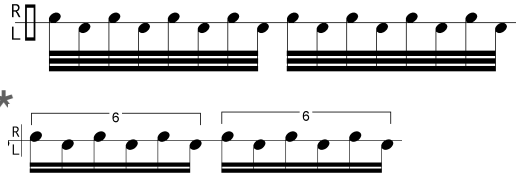


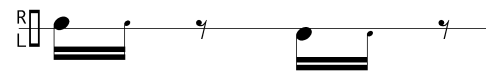
RIGHT HAND | loud - soft LEFT HAND | loud - soft



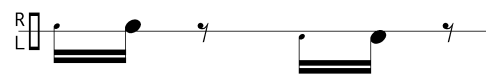
**1. Single Stroke Roll**  
*Einzelschläge | Coup Simple*



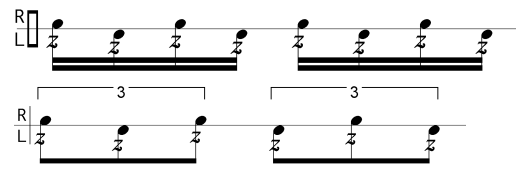
**2. Basic element "loud-soft"**  
*Loud-soft element*



**3. Basic element "soft-loud"**  
*Soft-loud element*



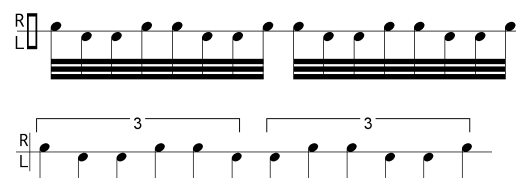
**4. Closed Roll**  
*Geschlossener Wirbel | Roulement*



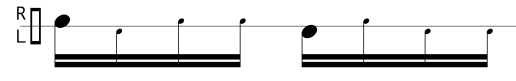
**5. Open Roll**  
*Offener Wirbel | Roulement*



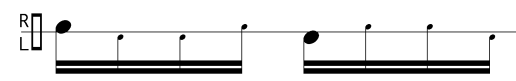
**6. Inverted Open Roll**  
*Invertierter, offener Wirbel*



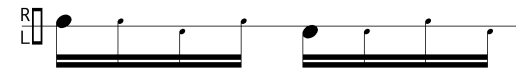
**7. Single Paradiddle**  
*Mühle | Moulin*



**8. Inward Paradiddle**  
*Invertierter Paradiddle bzw. Mühle*



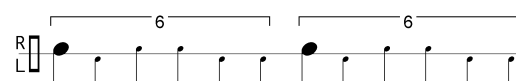
**9. Reverse Paradiddle**  
*Invertierter Paradiddle bzw. Mühle*



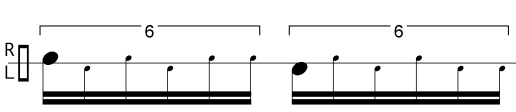
**10. Outward Paradiddle**  
*Invertierter Paradiddle bzw. Mühle*



**11. Paradiddle-Diddle**



**12. Double Paradiddle**  
*Coup Volant*



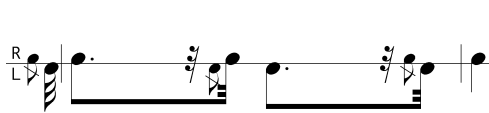
**13. Flam**  
*Einfacher Vorschlag | "Schlepp" | Fla*



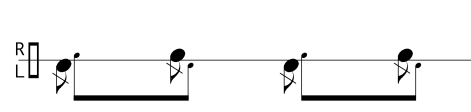
**14. Coup de Charge (Switzerland)**  
*Charge stroke (Swiss tradition)*



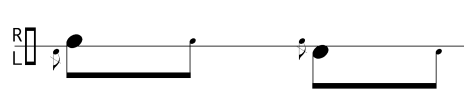
**15. Flammed Coup de Charge**  
*Flammed charge stroke*



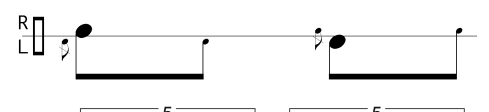
**16. Coup de Charge (France)**  
*Charge stroke (French tradition)*



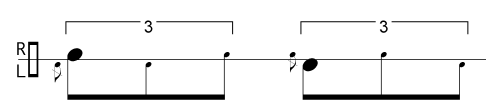
**17. Flam Tap**  
*Stroke and Flam | Batard*



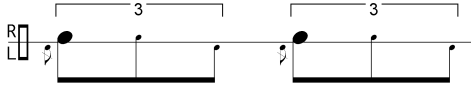
**18. Inverted Flam Tap**  
*Flam and Stroke | Doublé | Coup Anglais*



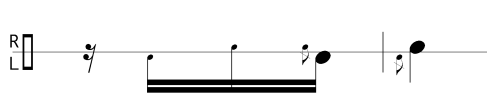
**19. Flam Accent**  
*Schlepptriole | Batafla*



**20. Swiss Army Triplet**  
*Schweizer Ordonnanztriole*



**21. Pataflafla**  
*Bataflafla*



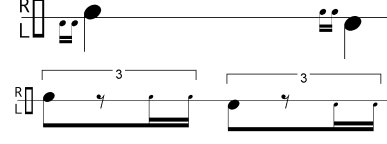
**22. Single Flammed Mill**  
*Windmill | Schleppmühle*



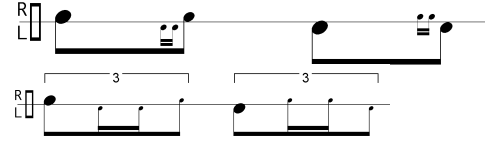
**23. Swiss Dragadiddle**  
*3er Ruf Mühle | Patatrata*



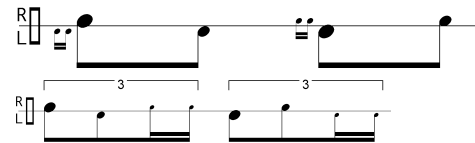
**24. Half Drag**  
*Drag | 3er Ruf | Ra de 3*



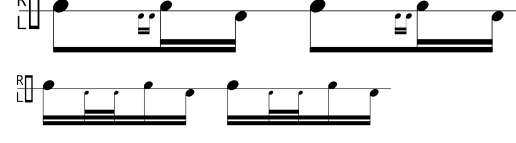
**25. Single Drag Tap**  
*Single Drag | Rigodon*



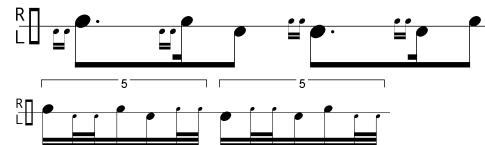
**26. Reversed Single Drag Tap**  
*Umgekehrter Rigodon*



**27. Lesson 25**  
*Quick Scotch | Raté Sauté de 3*



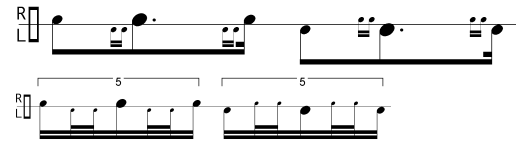
**28. Double Drag Tap**  
*Double Drag | Tagwachtstreich | Diane*



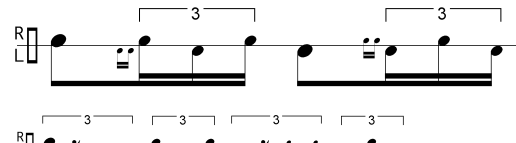
**29. Reversed Double Drag No. 1**  
*Umgekehrter Tagwachtstreich*



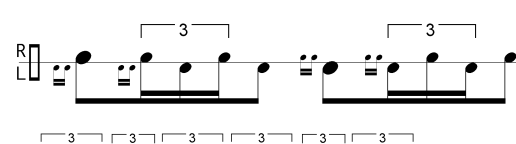
**30. Reversed Double Drag No. 2**  
*Tagwachtstreich, 3er Ruf Kombination*



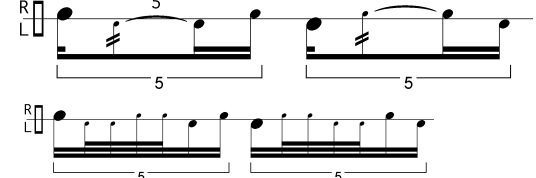
**31. Single Ratamacue**



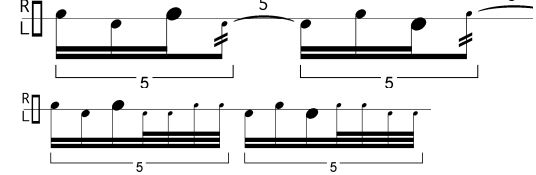
**32. Double Ratamacue**  
*Triplierter Tagwachtstreich*



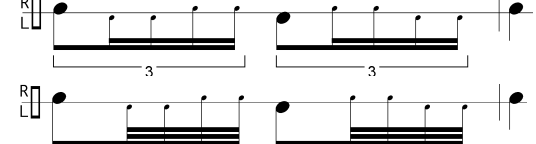
**33. Final of Seven**  
*7er Endstreich | Raté Sauté de 5*



**34. Reversed Final of Seven**  
*Umgekehrter 7er Endstreich*



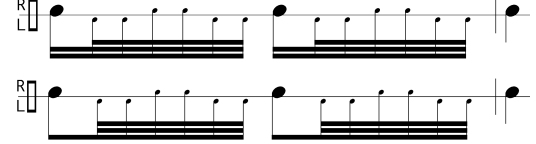
**35. 5-Stroke Roll**  
*"Mother" | 5er Ruf | Ra de 5*



**36. 6-Stroke Roll**  
*6er Ruf | Ra de 6*



**37. 7-Stroke Roll**  
*7er Ruf | Ra de 7*



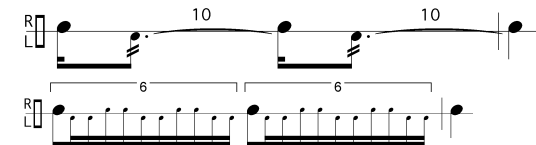
**38. 9-Stroke Roll**  
*9er Ruf | Ra de 9*



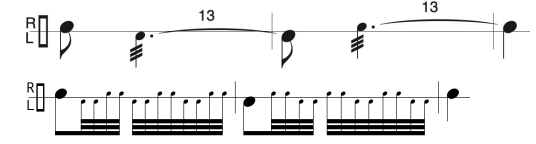
**39. 10-Stroke Roll**  
*10er Ruf | Ra de 10*



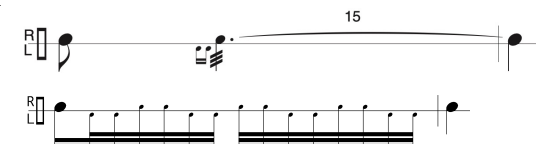
**40. 11-Stroke Roll**  
*11er Ruf | Ra de 11*



**41. 13-Stroke Roll**  
*13er Ruf | Ra de 13*



**42. 15-Stroke Roll**  
*15er Ruf | Ra de 15*



\* Find German/Swiss and French names of the patterns as well as hints on interpretation and performance details below the notation of the rudiments.